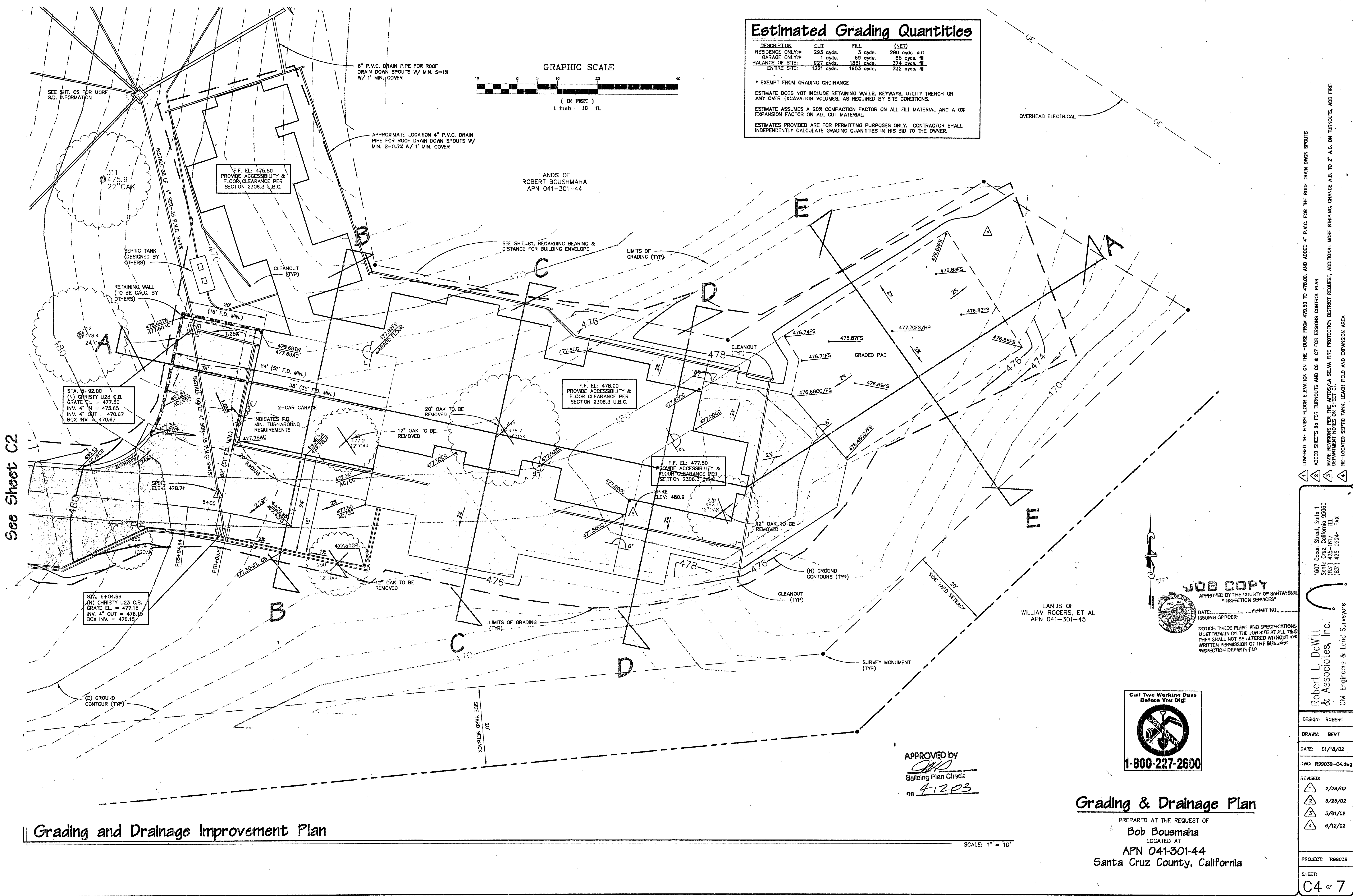
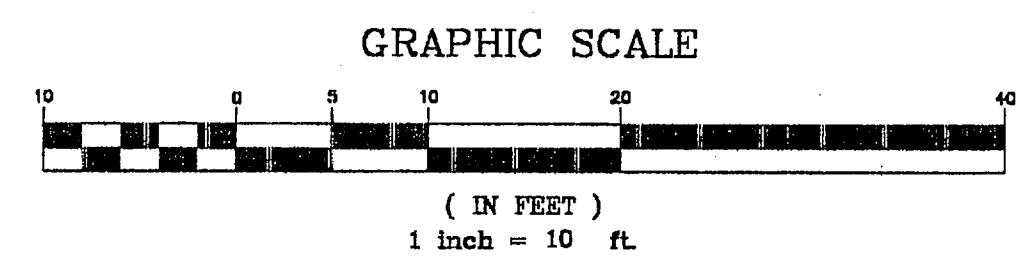


Estimated Grading Quantities

DESCRIPTION	CUT	FILL	(NET)
RESIDENCE ONLY**	293 cyds.	3 cyds.	290 cyds. cut
GARAGE ONLY**	1 cyds.	63 cyds.	69 cyds. fill
BALANCE OF SITE:	827 cyds.	1881 cyds.	1054 cyds. fill
ENTIRE SITE:	1221 cyds.	1953 cyds.	732 cyds. fill

* EXEMPT FROM GRADING ORDINANCE
 ESTIMATE DOES NOT INCLUDE RETAINING WALLS, KEYWAYS, UTILITY TRENCH OR ANY OVER EXCAVATION VOLUMES, AS REQUIRED BY SITE CONDITIONS.
 ESTIMATE ASSUMES A 20% COMPACTION FACTOR ON ALL FILL MATERIAL AND A 0% EXPANSION FACTOR ON ALL CUT MATERIAL.
 ESTIMATES PROVIDED ARE FOR PERMITTING PURPOSES ONLY. CONTRACTOR SHALL INDEPENDENTLY CALCULATE GRADING QUANTITIES IN HIS BID TO THE OWNER.



See Sheet C2

Grading and Drainage Improvement Plan

SCALE: 1" = 10'

APPROVED BY

 Building Plan Check
 on 4/20/03

Call Two Working Days Before You Dig!

1-800-227-2600

JOB COPY
 APPROVED BY THE COUNTY OF SANTA CRUZ
 "INSPECTION SERVICES"
 DATE: _____ PERMIT NO. _____
 ISSUING OFFICER: _____

NOTICE: THESE PLANS AND SPECIFICATIONS MUST REMAIN ON THE JOB SITE AT ALL TIMES. THEY SHALL NOT BE ALTERED WITHOUT THE WRITTEN PERMISSION OF THE BUILDING INSPECTION DEPARTMENT.

Grading & Drainage Plan

PREPARED AT THE REQUEST OF
Bob Boushaha
 LOCATED AT
APN 041-301-44
 Santa Cruz County, California

LOWERED THE FINISH FLOOR ELEVATION ON THE HOUSE FROM 478.00 TO 476.00, AND ADDED 4" P.V.C. FOR THE ROOF DRAIN DOWN SPOUTS
 ADDED SHEETS 26 FOR TURNOUTS AND C6 & C7 FOR EROSION CONTROL PLAN
 MADE REVISIONS PER THE APPLICABLE SELVA FIRE PROTECTION DISTRICT REQUEST. ADDITIONAL MORE STRIPING CHANGE A.B. TO 2" A.C. ON TURNOUTS, AND FIRE DEPARTMENT NOTES ON SHEET C1.
 RE-LOCATED SEPTIC TANK, LEACH FIELD AND EXPANSION AREA.

1607 Ocean Street, Suite 1
 Santa Cruz, California 95060
 (831) 425-1617 TEL. (831) 425-0224 FAX
Robert L. DeWitt & Associates, Inc.
 Civil Engineers & Land Surveyors

DESIGN:	ROBERT
DRAWN:	BERT
DATE:	01/18/02
DWG:	R99039-C4.dwg
REVISED:	
1	2/28/02
2	3/25/02
3	5/01/02
4	6/12/02

PROJECT: R99039
 SHEET: C4 OF 7